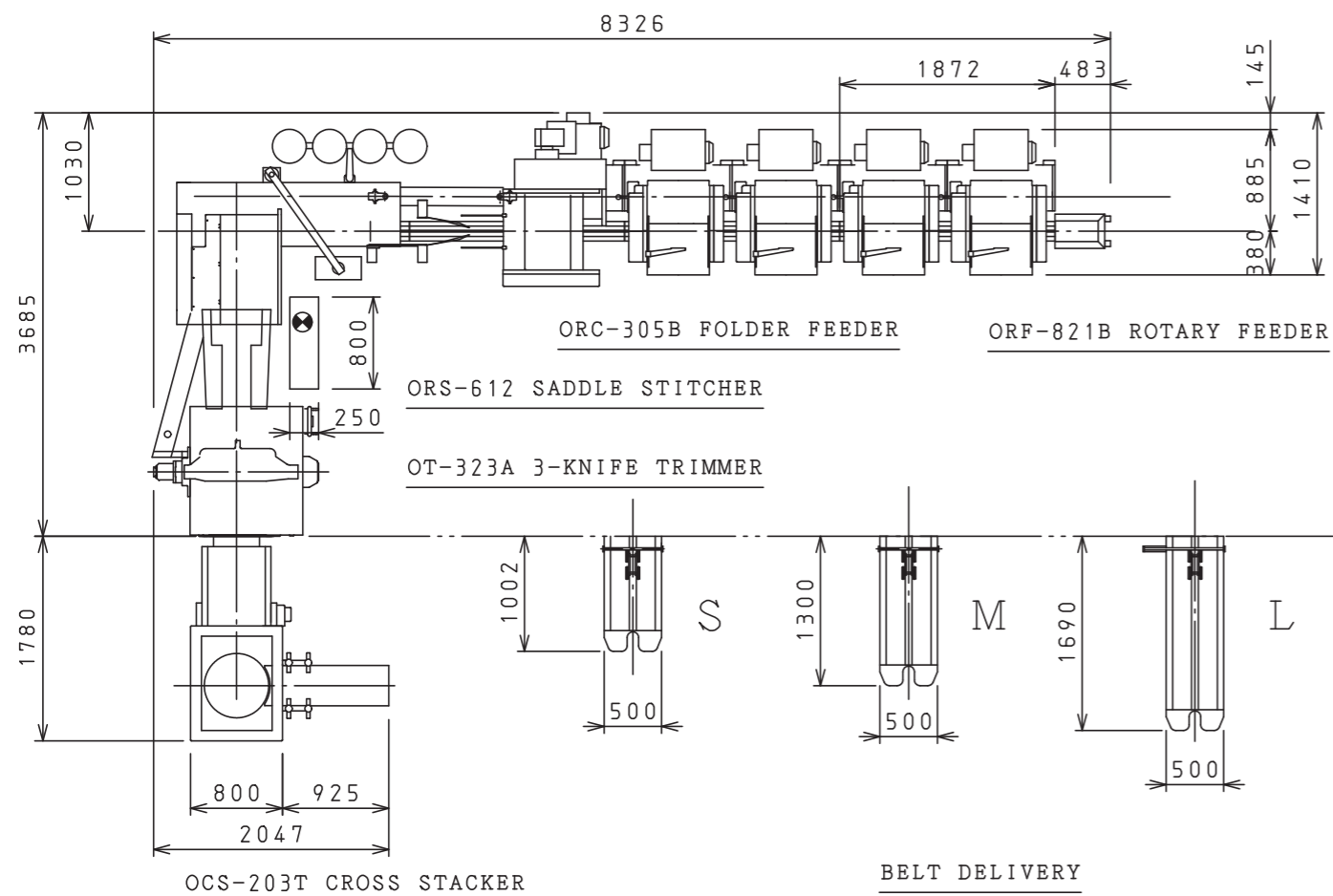


## DIMENSIONS



## SPECIFICATION

- Mechanical Speed
  - Max. .... 12,000/Hour
- Book Size : Hand-feed
  - Max. .... 375×400mm
- Book Size : Auto-feed
  - Max. .... 320×480mm
  - Min. .... 95×100mm
- Book Size : Trimmed
  - Max. .... 300×450mm
  - Min. .... 90×120mm
  - Trim Thickness ..... 1~14mm
- Center Cut Device : Trimmed
  - Max. .... 300×450/2mm
  - Min. .... 105×257/2mm
  - Max.Trim Thickness ..... 6mm
  - Standard Cutting Gaps ..... 0,4,6mm

### Available Stitching Heads

	S80AS	S80B	S50	S45	S80R
Max.Thickness	7mm	7mm	5mm	3mm	3mm
Stitch Crown Width	13mm	15mm	13mm	11mm	13mm
Min.Distance of Staples	80mm	80mm	58mm	48mm	80mm
Number of Stitching Position	1~4	1~4	1~6	1~8	1~4

- ★S80R is a loop stitching Head.
- ★Standard model has 3 stitching heads.

## OSAKO SEIKI & CO.,LTD.

### Head Office

208 Oh-Aza,Natsumo,Takahata-Machi,Higashiokitama-Gun,  
Yamagata 999-2172 Japan  
Phone:0238-57-3160 Fax.0238-57-3149

### Saitama Sales Office

1F 491-3 HigashiMiyashita,Minuma-ku,Saitama-Shi,Saitama 337-0012 Japan  
Phone:048-878-9730 Fax.048-878-9782

### Osaka Sales Office

1-7-23 Imagome,HigashiOsaka-Shi,Osaka 578-0903 Japan  
Phone:072-970-6771 Fax.072-970-6772

URL <http://www.osako.co.jp>

# MODEL 368

SAN ROKU HACHI

SYSTEM  
**368 FULLY AUTOMATIC HIGH  
SPEED SADDLE STITCHER**



THE MOST SALABLE 368 IN THE  
WORLD AMONG ALL OSAKO MODELS



World-class High Quality

Design,specifications and measurements  
subject to change without notice.

2021.Feb.00.500





# OSAKO LONG SELLER FOR STABLE OPERATION AND EXCELLENT PRODUCTIVITY AT HIGH SPEED RUNNING

OSAKO, Specialist in manufacturing saddle stitchers has plenty of new and modern facility to produce the most advanced saddle stitchers. Model 368 (San-Roku-Hachi) is designed for safety and easy operation at high speed.

### Delivery Conveyor for 2-up production

This can use normal production, too. it has counter system.



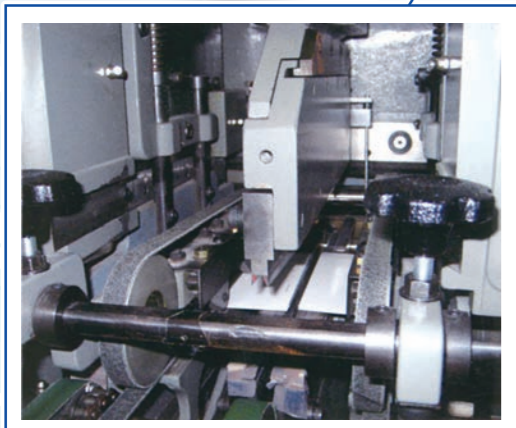
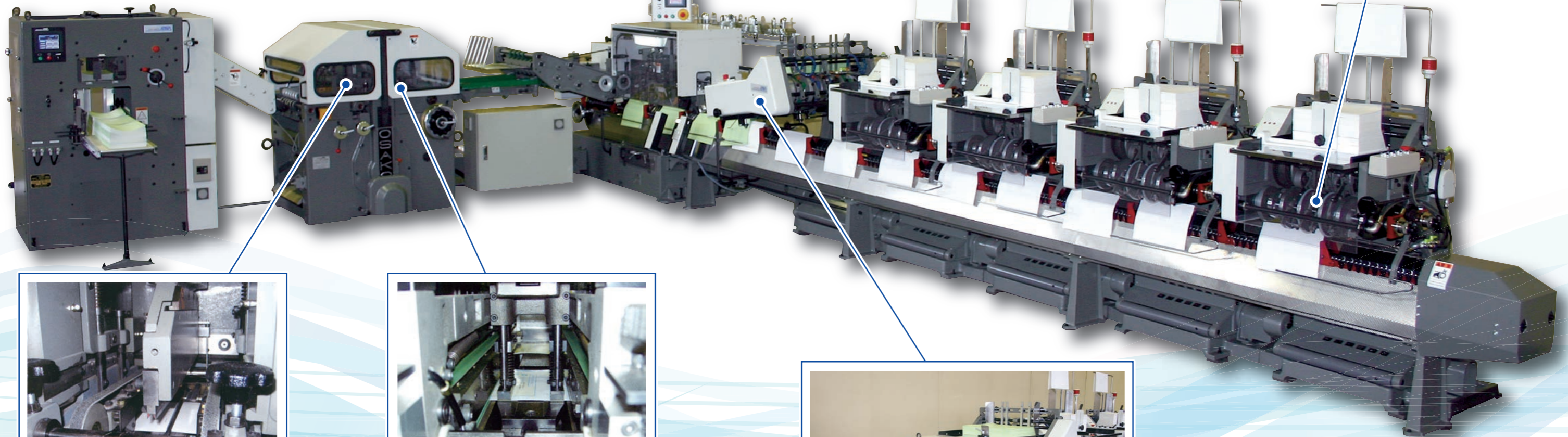
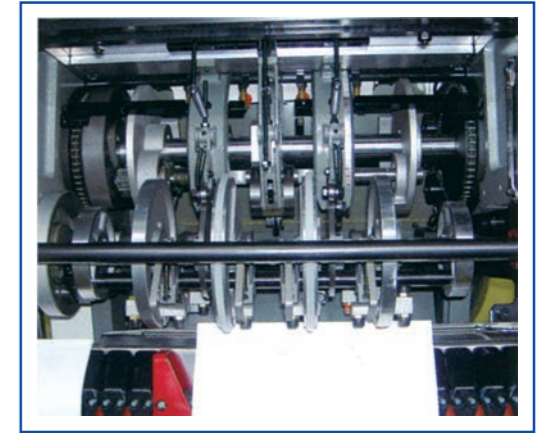
### Center Control Monitor

Every mechanical operation is set up at the central monitor as computer system.



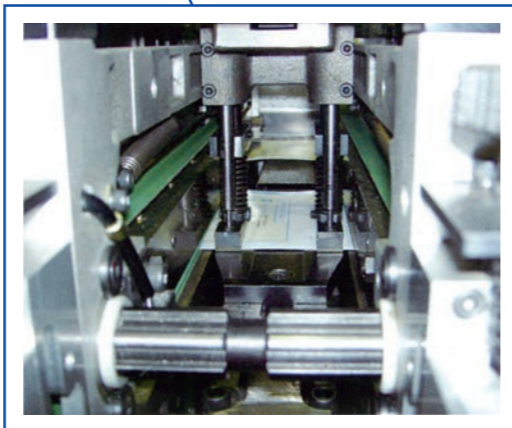
### ORF-821 Rotary Feeder

- ① It feeds various signatures at high speed. Setup time is short. Both full speed and half speed is set up quickly. Light paper is difficult for fast feeding. In this case the same signature feeds to two sections running at half speed. Signature with lap or with no lap can be fed with no problem.
- ② Table is low so that operators easily feed signatures, possible to pile up 400mm high on the table.
- ③ All feeders are tilt back, so that signatures are fed by hand.
- ④ Each feeder has a control box. Operators need not go back to central control box. In order to run, stop or inching each feeder.
- ⑤ In case paper jam happens, machine stops and at the trouble feeds. Light red lamp.



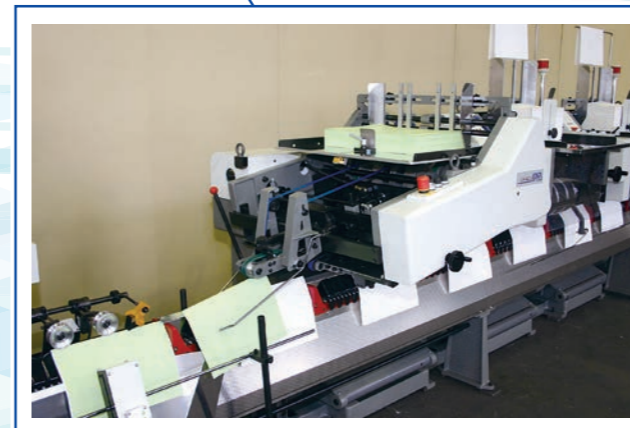
### Center Cut Device

For 2-up production, signatures are cut off at center the same time as the side cutting. Cutting Gap: 0, 4, 6mm.



### Punching Device

Punch one hole, two holes and oval hole. Holes are punched out at the same time as the side cutting.



### ORC-305B Folder Feeder

To fold and feed cover paper to gathering chains. No need to fold cover paper before feeding. This unit is doing double performances.

### Other Options

- Wire Monitor
- Side Caliper
- Others